

Users Guide

Wyse® Mobile Thin Computer, X90L/X90Le

Issue:030708
PN: 883908-01 Rev. A

Copyright Notice

© 2008, Wyse Technology Inc. All rights reserved.

This manual and the software and firmware described in it are copyrighted. You may not reproduce, transmit, transcribe, store in a retrieval system, or translate into any language or computer language, in any form or by any means, electronic, mechanical, magnetic, optical, chemical, manual or otherwise, any part of this publication without express written permission.

End User License Agreement (“License”)

A printed copy of the Wyse Technology End User License Agreement is included in the shipping box and provided for your reference only. The License at <http://www.wyse.com/license> as of the purchase date is the controlling licensing agreement. By copying, using, or installing the software or the product, you agree to be bound by those terms.

Trademarks

Wyse and Winterm are registered trademarks, and the Wyse logo and Winterm logo are trademarks of Wyse Technology Inc. ICA is a registered trademark and MetaFrame is a trademark of Citrix Systems Inc. Microsoft and Windows are registered trademarks of Microsoft Corporation. All other products are trademarks and/or registered trademarks of their respective companies. Specifications subject to change without notice.

Patents

This product and/or associated software are protected by copyright, international treaties, and various patents, including the following U.S. patents: 6,836,885 and 5,918,039.

Restricted Rights Legend

You acknowledge that the Software is of U.S. origin. You agree to comply with all applicable international and national laws that apply to the Software, including the U.S. Export Administration Regulations, as well as end-user, end-use and country destination restrictions issued by U.S. and other governments. For additional information on exporting the Software, see <http://www.microsoft.com/exporting>.

Ordering Information

For availability, pricing, and ordering information in the United States and Canada, call 1-800-GET-WYSE (1-800-438-9973) or visit us at <http://www.wyse.com>. In all other countries, contact your sales representative.

FCC Statement

This equipment has been tested and found to comply with the limits for either Class A or Class B digital devices (refer to "Regulatory Compliance for Thin Computers"), pursuant to Part 15 of the FCC Rules. These limits are designed to provide reasonable protection against harmful interference in a residential installation. This equipment generates, uses, and can radiate radio frequency energy and, if not installed and used in accordance with the instructions, may cause harmful interference to radio communications. However, there is no guarantee that interference will not occur in a particular installation. If this equipment does cause harmful interference to radio or television reception, which can be determined by turning the equipment off and on, the user is encouraged to try to correct the interference by one or more of the following measures:

- Reorient or relocate the receiving antenna.
- Increase the separation between the equipment and the receiver.
- Connect the equipment into an outlet on a circuit different from that to which the receiver is connected.
- Consult the dealer or an experienced radio/TV technician for help.

Shielded interconnect cables and shielded AC power cable must be employed with this equipment to insure compliance with the pertinent RF emission limits governing this device. Changes or modifications not expressly approved by the system's manufacturer could void the user's authority to operate the equipment.

**Caution**

Changes or modifications not covered in this manual must be approved in writing by the manufacturer's Regulatory Engineering department. Changes or modifications made without written approval may void the user's authority to operate the equipment.

Regulatory Compliance for Thin Computers

EMC and Safety Requirements

Thin computers are compliant with the regulatory requirements in the regions listed below.

U.S.A. - FCC Part 15 (class B)

Canada - CAN/CSA-C22 No. 60950

Europe - EN 55022 (class B), EN 61000-3-2 (class A), EN 61000-3-3, EN 90650-1:2000+ALL

Canadian DOC Notices

Class A

This digital apparatus does not exceed the Class A limits for radio noise emissions from digital apparatus set out in the Radio Interference Regulations of the Canadian Department of Communications.

Le présent appareil numérique n'émet pas de bruits radioélectriques dépassant les limites applicables aux appareils numériques de la classe A prescrites dans le Règlement sur le brouillage radioélectrique édicté par le Ministère des Communications du Canada.

Class B

This digital apparatus does not exceed the Class B limits for radio noise emissions from digital apparatus set out in the Radio Interference Regulations of the Canadian Department of Communications.

Le présent appareil numérique n'émet pas de bruits radioélectriques dépassant les limites applicables aux appareils numériques de la classe B prescrites dans le Règlement sur le brouillage radioélectrique édicté par le Ministère des Communications du Canada.

IEC/EN Notice

These products conform to the requirements of IEC950 and EN60950.

These products conform to requirements of EN55022 for Class A equipment or EN55022 for Class B equipment (refer to "Regulatory Compliance for Thin Computers").

Wireless Usage and Requirements

Radio transmitting type devices (RF module) are present as a standard option. These devices operate in the 2.4 GHz band (i.e. 802.11b/g/n WLAN & Bluetooth).

As a general guideline, a separation of 20 cm (8 inches) between the wireless device and the body, for use of a wireless device near the body (this does not include extremities) is typical. This device should be used more than 20 cm (8 inches) from the body when wireless devices are on and transmitting.

Some circumstances require restrictions on wireless devices. Examples of common restrictions include:

- When in environments where you are uncertain of the sanction to use wireless devices, ask the applicable authority for authorization prior to use or turning on the wireless device.
- Every country has different restrictions on the use of wireless devices. Since your system is equipped with a wireless device, when traveling between countries with your system, check with the local Radio Approval authorities prior to any move or trip for any restrictions on the use of a wireless device in the destination country.
- Wireless devices are not user-serviceable. Do not modify them in any way. Modification to a wireless device will void the authorization to use it. Please contact the manufacturer for service.

Cable Notice

The use of shielded I/O cables is required when connecting this equipment to any and all optional peripheral or host devices. Failure to do so may cause interference and violate FCC and international regulations for electromagnetic interference.

Device Power Supply

Wyse X class thin computers use an external power adapter. Use only with Wyse approved power adapters (refer to the Wyse Web site).



Caution

Replace power adapter with the same or equivalent type as recommended by the manufacturer.

Battery Information

Wyse X class thin computers contain a replaceable battery. The battery is designed to work with your Wyse thin computer. Do not use a battery from other thin computers with your thin computer. Replace the battery only with a compatible battery purchased from Wyse (refer to the Wyse Web site).



Warning

There is a risk of explosion if the battery is replaced by an incorrect type. Always dispose of used batteries according to the instructions accompanying the battery.



Caution

Misuse of the battery may increase the risk of fire or chemical burn. Do not puncture, incinerate, disassemble, or expose the battery to temperatures above 65°C (149°F). Keep the battery away from children. Handle damaged or leaking batteries with extreme care. Damaged batteries may leak and cause personal injury or equipment damage.



Contents

1 About This Guide

- About this Guide 1
 - Organization of this Guide 1
 - Finding Information in this Guide 1
- Important Safeguards 2
 - Caution Statements 2
- Wyse Technical Support 3
 - Links to Related Documentation and Services 3

2 Introducing Your Thin Computer

- Check the Package Contents 5
- Features 5
- Inside View 6
- Front View 6
- Back View 7
- Right Side View 7
- Left Side View 8
- Bottom View 8

3 Getting Started

- Setting Up Your Thin Computer 9
 - Step 1 - Install the Battery 9
 - Step 2 - Connect the Power Cable 9
 - Step 3 - Turn On the Thin Computer 10
- Turning Off the Thin Computer 10
- Removing the Battery 10
- Adjusting the Brightness 11
- Adjusting the Volume 11
- System Indicator Lights 11
- Keyboard Function Keys for System Control 12
- Numeric Keypad 12
- Touch Pad 13
 - Dragging 14
 - Scrolling 14
 - Touch Pad Precautions 14
- Connecting a Printer 14
- Power Management 14
 - Monitoring Battery Power 15
 - Low Battery Alarms 15
 - Battery Charging 16
 - When to Replace the Battery 17
 - Changing the Battery 17
 - Power Saving Modes 17
 - Standby Mode 18
 - Initiating Standby Mode 18
 - Power Button Settings 18

Power Saving Tips	18
Heat Considerations	19
Graphics System	19
Screen Controls	19
Connecting to an External Monitor	19

4 Making Connections

Wired Net/LAN	21
Wi-Fi	21
Making a Connection	21
Adding a Certificate	21
Express Card	22
Installing a Card	22
Removing a Card	23
Express Card Size Restrictions	23
Bluetooth	23
Creating a Partnership Between Phone and Thin Computer	23
Establishing the connection	24
Enabling the Bluetooth device for connecting to the Internet:	25
Connecting to a Network through a DUN-Capable Mobile Phone	26
Disconnecting Windows Bluetooth DUN	29

5 Establishing a Server Environment

Setting Up Access to the Enterprise Servers	31
---	----

6 Frequently Asked Questions

List of Figures

List of Tables



1

About This Guide

The Wyse X90L and X90Le are wireless mobile thin computers in the Wyse X class of mobile thin computers. The Wyse X90L and X90Le use the Windows™ XP Embedded (XPe) operating system. These thin computers provide access to applications, files, and network resources made available on machines hosting Citrix™ ICA and Microsoft™ RDP session services. Generally, the keyboard, mouse, audio/video, and display data are transmitted over the network between the thin computer and session servers. Locally installed software permits remote administration of the thin computers and provides local maintenance functions.

About this Guide

This users guide is written primarily for desktop users. It contains detailed information you need to use and troubleshoot your mobile thin computer.

Organization of this Guide

This guide is organized as follows:

Chapter 2, "Introducing Your Thin Computer," provides package contents, features, and detailed views of your mobile thin computer.

Chapter 3, "Getting Started," provides information on setting up and using your thin computer, power management, and the graphics system.

Chapter 4, "Making Connections," provides information about the various ways your thin computer makes connections.

Chapter 5, "Establishing a Server Environment," provides information on the network architecture and enterprise server environment needed to provide network and session services enabling Wyse X class thin computers' network connection. It also includes information to help you address important considerations when configuring access to the server environment and when configuring the services to be provided by the server environment.

Chapter 6, "Frequently Asked Questions," contains information and help on installation, setup, conflicts, and general troubleshooting.

Finding Information in this Guide

Use the bookmarks and search features in Acrobat Reader:

- Choose **Edit | Find** or **Edit | Search** to search in the document for information about a specific topic.
- Click the **Bookmarks** button (if necessary) to open the Bookmarks pane, and then click the names of chapters or headings to go from place to place in the document. Click the plus sign next to a chapter name to display its headings.

Important Safeguards

Please follow these important safeguards:

- Follow all warnings and instructions noted in this documentation and in the Windows Help program.
- The first time you use your thin computer, carefully read the "Introducing Your Thin Computer" section of this manual and initialize the battery to ensure optimum battery performance.
- To clean your thin computer, first disconnect it from the electrical outlet, and then use a soft cloth dampened with water for cleaning. Do not use aerosols, solvents, or strong detergents.
- Do not use the thin computer near open water or other liquids. Never spill liquid onto the thin computer.
- Do not place the thin computer in an unstable location where it might slip or be knocked over. Serious damage could result from a fall.
- Slots and openings in the system cabinet are for ventilation purposes. Do not block or cover these openings or the system could overheat. Do not use or store the thin computer near a source of heat or dust.
- On the bottom of this thin computer, there is a label with information on the power requirements of this system. These requirements must be followed. If you are unsure of your local power supply, consult your dealer or local power company.
- Do not step on or place anything on the power cable or power adapter.
- If you use the thin computer with an extension cord, ensure that the total ampere ratings of all the devices sharing the extension do not exceed the rating of the extension cord or the rating of the wall outlet.
- Never push foreign objects into the thin computer through any of the slots or openings. Dangerous voltages are present, which could cause electric shock or fire, or damage sensitive components.
- For best results, use a power strip with a built-in surge protector. Do not use inferior extension cords as this may result in damage to your thin computer.

Caution Statements

Improper connection or use of this product could result in component failure or undesired interference. Read the following caution statements before setting up and operating your thin computer.

Setup

- Do not force a connector into its socket. If any undue resistance is encountered, ensure that the connector is correctly oriented to the receptacle.
- The main unit is not user serviceable; opening or accessing the case may violate your warranty.
- For wireless usage and requirements, refer to the regulatory notices in the thin computer's documentation.

Venting and Care

- Allow sufficient space around your thin computer for ventilation; do not place your thin computer in any enclosure that restricts airflow around the device, such as a closed briefcase, while the computer is turned on. Restricting airflow can damage your thin computer or cause a fire; do not place any objects on the device or block the vent holes

under the device. Find environmental operating specifications in the thin computer's datasheet located at <http://www.wyse.com/products>.

- Do not allow your thin computer to rest directly on exposed skin for extended periods of time during operation. The base surface temperature will rise during normal operation (particularly when AC power is used). Prolonged contact with exposed skin can cause discomfort or a burn.

Power Sources

- To ensure regulatory compliance, use only the power adapter included in the shipping carton, or a Wyse-approved equivalent, with your thin computer. Refer to the regulatory notices in your thin computer's documentation.
- You can connect the power adapter at any time with the thin computer turned either on or off.
- Do not hard reset your thin computer by holding down the power button during normal operation.
- When turning off your thin computer, be sure to perform a complete shutdown (via the user interface). Do not disconnect the AC power cable, DC power adapter cable, or shut off power at a circuit breaker (including power strips), etc., to turn off the device.
- Surge protectors for electrical devices are recommended in areas of lightning. However, when lightning is occurring, your equipment should be properly shut down and unplugged from AC power until the storm has passed.
- Dispose of your battery properly when it no longer holds a charge or is damaged. Contact your local waste or environmental agency for instructions.



Warning

The X class mobile thin computers contain a replaceable battery. There is a risk of explosion you replace the battery with an incorrect type. Always dispose of used batteries according to the manufacturer's instructions.

Wyse Technical Support

To access Wyse technical resources, visit <http://support.wyse.com>. If you still have questions, you can submit your questions using the [Wyse Self-Service Center](#) or call Customer Support at 1-800-800-WYSE (toll free in U.S. and Canada). Hours of operation are from 6:00 am. to 5:00 pm. PST, Monday through Friday.

To access international support, visit <http://www.wyse.com/global>

Links to Related Documentation and Services

Wyse mobile thin computer features can be found in the Datasheet for your specific thin computer model. Datasheets are available on the Wyse Web site at: <http://www.wyse.com/products>.

Administrator and User documentation for your thin computer model are available on the Wyse Web site at: <http://www.wyse.com/manuals>.

Wyse Thin Computing Software is available on the Wyse Web site at: <http://www.wyse.com/products/software>.

If you need to upgrade your XPe operating system, contact Wyse Customer Support at:
<http://www.wyse.com/support>.

2

Introducing Your Thin Computer

This section provides package contents, features, and detailed views of your thin computer.

Check the Package Contents

After opening the package, carefully inspect the contents. If any of the items is missing or appear damaged, contact your dealer. The shipping carton should contain the following:

- Thin computer
- Battery
- Power adapter with AC power cable



Caution

When purchasing any of the accessories listed above, purchase only those accessories that are approved for use with your thin computer. The above accessories are proprietary items. Your system vendor can obtain these approved accessories. If you use items that are not approved for use with this thin computer, you may cause your thin computer to malfunction, or to emit or receive electromagnetic radiation in excess of local regulations. For non-proprietary accessories such as PC cards or printers, ensure that the accessory functions properly in your thin computer before making the purchase. Your system vendor may be able to recommend reliable brands and models.

Features

Features that the thin computer include:

- **LAN Capability** - A built-in 10/100/1000 Mbps Ethernet port allows you to access the Internet or a local area network (LAN).
- **LCD** - Your thin computer has an easy-to-view 15.4-inch (Metric equivalent) WXGA LCD panel.
- **Built-in Stereo Speakers** - The stereo speakers enable you to run a variety of multimedia applications.
- **Convenient Audio Control** - The conveniently located audio control keys enable you to easily adjust the volume of the stereo speakers.

Inside View



- | | |
|-------------------------|-----------------------------|
| (1) Display | (5) System indicator lights |
| (2) Power On/Off button | (6) Touch pad button (2) |
| (3) Keyboard* | (7) Touch pad |
| (4) Function key | |

* International keyboard shown.

Front View



- | |
|-----------------------------|
| (1) System indicator lights |
| (2) Release latch |

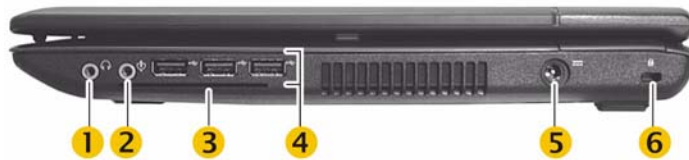
Back View



(1) VGA Port - Connect an analog monitor.

(2) LAN RJ-45 Network Port - With the built-in Ethernet LAN combo, you can make LAN connections. Connection speed is up to 1 Gbps.

Right Side View



(1) Line out/Headset out - Connect a stereo headset or external speakers to this port to listen to multimedia.

(2) Microphone In - Connect a microphone to this port to record.

(3) Smart card slot - Smart card slot is a feature for X90Le; insert with electrical contacts facing upward.

(4) USB 2.0 port (3)- Use for attaching monitors, input devices, scanners, and other devices to the thin computer.

(5) Power adapter input - Connect the DC power cable from the power adapter to this port.

(6) Kensington lock slot - Your thin computer includes a Kensington lock hole to be used with a standard Kensington lock. You can connect the thin computer to a large object with the Kensington lock to prevent theft of your thin computer. See the documentation that comes with your Kensington lock for more information.



Note

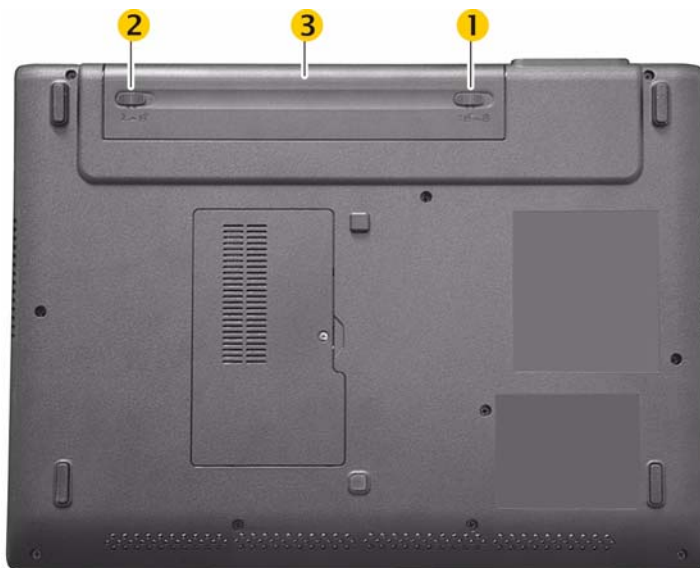
The USB 2.0 port constantly supplies 5V power to the external USB device even when the system is at power off state. This enables external USB device to be charged at any time without turning on the system. To prevent draining the battery power when the system is powered off, remove the external USB device when not in use.

Left Side View



- (1) **DVI port** - Connect to a digital monitor.
- (2) **USB 2.0 port** - Attach a computer peripheral.
- (3) **SD card slot** - Attach a Secure Digital (SD) memory card. You can use this card as a second hard drive to store data files, photographs, and video.
- (4) **Express card slot** - This slot is where an ExpressCard/34 or Express Card/54 card is inserted.

Bottom View



- (1) **Battery lock** - Slide to unlock.
- (2) **Battery release latch** - Slide and hold to unlatch.
- (3) **Battery**

3

Getting Started

This section provides information on setting up and using your thin computer, power management, and the graphics system.

Setting Up Your Thin Computer

To quickly set up your thin computer follow the next three simple steps.

Step 1 - Install the Battery

With your thin computer turned off, insert battery in the battery compartment located on the underside of the thin computer and secure it by sliding the latches.

1. Slide the battery lock **(3)** to unlock.
2. Slide and hold the battery release latch **(1)** as you gently insert the battery **(2)** into the battery compartment. Make sure the battery is properly orientated.
3. Make sure that the battery lock **(3)** locks back into position.

Figure 3-1 Battery Latches



Step 2 - Connect the Power Cable

Plug the power adapter connector to the thin computer as shown. Plug the AC power cable to the power adapter, and then plug the other end of the power cable to a wall outlet.

Figure 3-2 Connecting the Power Cable**Note**

You can connect the power adapter at any time with the thin computer turned either on or off.

Step 3 - Turn On the Thin Computer

Raise and adjust the lid, and press the power on/off button for two seconds. When you release the power on/off button, the power LED on the system indicators lights up.

After power-on, the thin computer goes through several boot sequence procedures before the operating system loads. See "Setting Up Access to the Enterprise Servers" for information about setting up your server environment. Additional information is available in the thin computers' operating system documentation, *Administrators Guide: Wyse® 9 Series, Based on Microsoft® Windows® XP Embedded*.

Turning Off the Thin Computer

Press the power on/off button for two seconds, or go to **Start | Shut Down**, choose **Shut Down** in the Shut Down Windows dialog box, and click OK.

Removing the Battery

With your thin computer turned off, slide the battery lock to unlock, and then slide and hold the battery release latch to gently pull the battery out of the battery compartment.

**Caution**

Before removing battery, turn off the thin computer and disconnect the power adapter from the electrical outlet.

Adjusting the Brightness

Use the following hot key combinations to adjust the display panel brightness:

- **Fn + ↓** decreases the brightness
- **Fn + ↑** increases the brightness

Adjusting the Volume






There are two ways in which to adjust the volume:

- You can adjust the volume with the hot key combinations as follows:
 - **Fn + ←** decreases the volume
 - **Fn + →** increases the volume
 - **Fn + Esc** mutes the volume
- Alternatively, you can adjust the volume with the Windows volume control located on the taskbar.

System Indicator Lights

The system indicator lights for status and power are in the lower-right corner of the keyboard. The status indicators light up when a particular function of the thin computer is active. Each indicator is marked with a symbol. The power indicators show which power source the system is using. The power indicators remain active and viewable even when the display panel is closed.


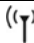






Table 3-1 System Indicator Lights for Status and Power

Icon	Color	Description
	Blue	Thin computer is powered on
	Blue	Wireless signal is enabled
	Amber Amber flash	Battery is charging Battery is low (5% remaining)
	Green	Keyboard Caps Lock is on
	Green	Keyboard Num Lock is on

Keyboard Function Keys for System Control

The numeric keypad numbers and symbols are printed in blue on the keypad keys. Press and hold the **Fn** key while pressing the appropriate function key.

Table 3-2 Keyboard Function Keys for System Control

Icon	Key	Description
Fn	Fn	Function Key
	Fn + Esc	Volume mute
	Fn + F2	Wireless and Bluetooth (X90Le) - on/off
	Fn + F10	Display switch - LCD / LCD+CRT / CRT*
	Fn + F12	Standby
Scr	Fn + Num	Scroll lock - on/off
Break	Fn + Pause	Break
Prt Scr	FN + Insert	Print screen
SysRq	FN + Delete	System request
Home	Fn + PgUp	Home
End	Fn + PgDn	End
	Fn + ↓	Brightness - decrease
	Fn + ↑	Brightness - increase
	Fn + ←	Volume - decrease
	Fn + →	Volume - increase

* In order to get the output to DVI, you must first go to Advance Settings in the Display control panel and change the default output setting to DVI, not VGA.

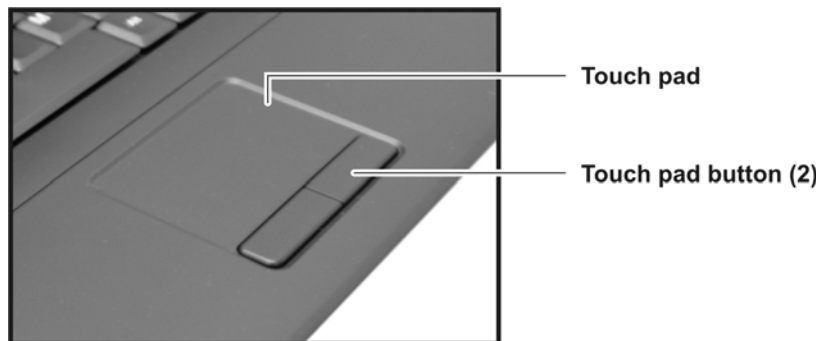
Numeric Keypad

The embedded numeric keypad consists of sixteen keys that make number intensive input more convenient. Press **Num** to enable or disable the numeric keypad.

Figure 3-3 Numeric Keypad

Touch Pad

The touch pad is a pressure-sensitive pointing device that provides all the features of a two-button mouse. Its primary function is to move the cursor around the screen.

Figure 3-4 Touch Pad

To use the touch pad:

1. Place your fingers on the keyboard in the normal typing position. The touch pad is easily accessible by moving either your left or right thumb off the space bar and on to the touch pad.
2. Gently move your thumb across the pressure-sensitive touch pad in the direction you want the cursor to move. The pad detects the change in pressure and moves the cursor in the corresponding direction.
3. The touch pad offers another method of making selections in a software program. It is called *double-tapping*. This function corresponds to double-clicking with a mouse. Once the cursor has been moved to the object you want to select, *lightly* double-tap the pressure-sensitive touch pad. This double-tapping on the touch pad will select the desired item and prompt the software to perform the related operation.
4. The buttons located directly below the touch pad are the same in function as those on a two-button mouse. Clicking these buttons makes selections, drags objects, or performs a variety of other functions depending on the software. To select an object,

first move the pointer over the object you want to select, and then press the left button one time. The functions of these buttons are software specific.

5. *Double-clicking* is a common technique for selecting objects or launching programs from icons. Once you have moved the pointer over the object you wish to select, rapidly press the left button two times. This action is commonly referred to as “double-clicking” an object.

Dragging

There are two ways to drag:

- Move the pointer to the desired location then press down the left button. While still holding down the left button, move the pointer to the desired location. Release the button.
- Move the pointer to the desired location. Tap the touch pad twice quickly as if you were double-clicking; however do not remove your finger after the second tap. Move the cursor to the desired location. Lift your finger to finish dragging.

Adjust the touch pad settings by clicking **Start | Settings | Control Panel | Mouse | Buttons**. These settings allow you to change the orientation of the touch pad from right-handed to left-handed and fine tune the pointer movement and timing of clicks.

Scrolling

When you want to scroll through a document, you may scroll with the touch pad. To scroll vertically, drag your finger along the right side of the touch pad. Making this motion is the same as dragging the vertical scroll box with your mouse.

Touch Pad Precautions

The touch pad is a pressure-sensitive device. If not properly cared for, it can be easily damaged. Please take note of the following precautions:

- Make sure the touch pad does not come into contact with dirt, liquids or grease.
- Do not touch the touch pad if your fingers are dirty.

Do not rest heavy objects on the touch pad or the touch pad buttons.

Connecting a Printer

To connect a parallel printer to your thin computer via the USB port, you will need a USB-to-printer adapter cable (not included). Before use, you may need to install the driver for the printer.

Power Management

Proper power management should prolong the life of the battery and enable the thin computer to run at a cooler temperature. This section explains how to monitor battery power, when to replace the battery, and how to make your battery last longer.

**Note**

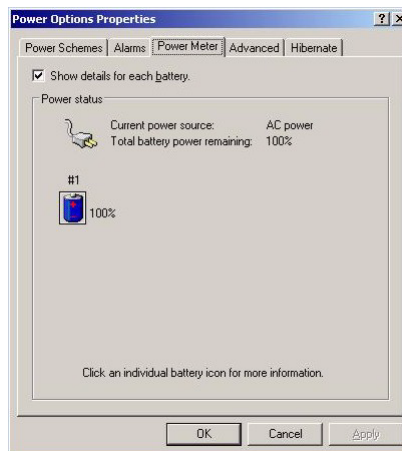
In order to access the power management options in the Power Options Properties dialog box, you must be logged in as an Administrator.

Monitoring Battery Power

There are two ways to display battery properties and monitor how much power the battery has left:

- Click **Start | Settings | Control Panel | Power Options**, and then click the **Power Meter** tab.
- Double-click the battery icon in the taskbar to display battery properties.

Figure 3-5 Power Option Properties - Power Meter

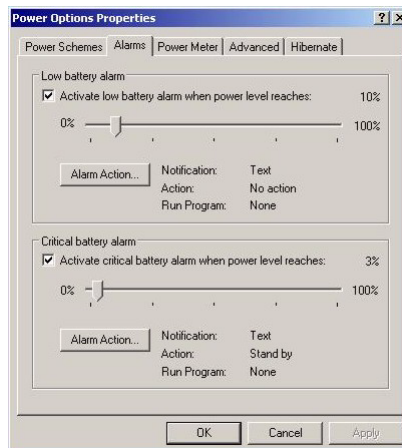


If you do not see the battery icon, enable it in **Start | Settings | Control Panel | Power Options**. Choose the **Advanced** tab and click **Always show icon on the taskbar**.

Low Battery Alarms

How your thin computer responds to a low battery condition is set under **Start | Settings | Control Panel | Power Options | Alarms**.

Two different power alarms can be enabled or disabled: the Low Battery Alarm (0%), and the Critical Battery Alarm (100%). Use the sidebar to set the power level at which the alarms are activated. Click on the **Alarm Action** button to choose whether the alarm sounds, displays a message, or both.

Figure 3-6 Power Option Properties - Alarms**Warning**

When battery power is low, the thin computer will display a warning on the screen. Take immediate action, such as saving files or connecting to the power adapter, or data may be lost.

When the thin computer alerts you that the battery is low, immediately do one of the following:

- Connect the power adapter
- Save your work, turn off the thin computer and replace the discharged battery with a charged battery (See *"Changing the Battery"*).

**Note**

Do not restart the thin computer until you have connected to the power adapter, or replaced the discharged battery with a charged battery.

Battery Charging

When you use the power adapter to connect your thin computer to a power outlet, the internal battery will automatically begin to recharge. While the battery is charging, the Battery Charge icon on the Indicator panel will be active. When the battery is fully charged, the Battery Charge icon will turn off.

If your thin computer is turned off or standby mode, a fully discharged battery will take about three hours to recharge.

**Note**

A fully charged battery can run the thin computer for approximately 3.5 hours.

When to Replace the Battery

Over time, the battery's capacity gradually decreases. We recommend that you replace your battery when you notice that it begins to store significantly less charge.

Changing the Battery

Change the main battery pack as follows:

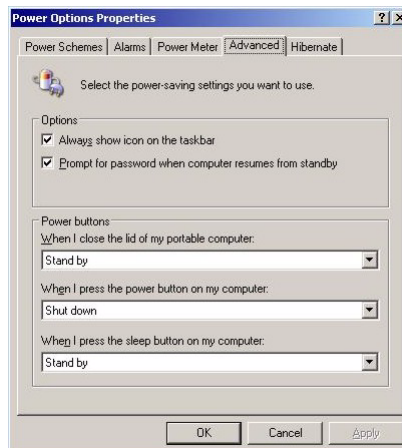
1. Turn off the thin computer and disconnect the power adapter from the electrical outlet.
2. Close the display cover and turn the thin computer over.
3. Slide the battery lock **(3)** to unlock.
4. Slide and hold the battery release latch **(1)** away from the battery **(2)** as you gently pull the battery out of the battery compartment.
5. Slide and hold the battery release latch **(1)** and then insert the new battery into the battery compartment. Make sure the replacement battery is properly orientated. Check that the battery lock **(3)** locks back into position.

Figure 3-7 Battery Latches



Power Saving Modes

Adjust the default power management settings in the Advanced tab of the Power Options Properties dialog box (click **Start | Settings | Control Panel | Power Options | Advanced**). The Power Options Properties dialog box allows you to set different actions to take when the thin computer is left idle for a certain amount of time.

Figure 3-8 Power Option Properties - Advanced

Standby Mode

Select the settings for Standby mode in the Power Management dialog box. You may have the thin computer stand by or you can power off the thin computer altogether.

Initiating Standby Mode

There are four ways to initiate Standby mode. The settings can be adjusted in the Power Management dialog box by:

- Clicking the **Standby** button in the Shut Down Windows dialog box
- Closing the screen cover (assuming no external monitor has been connected)
- Clicking the **Power on/off** button (if enabled in power settings)
- Pressing the Standby function key **Fn + F12**



Note

The thin computer will automatically enter Standby mode when not used for a set period of time.

Power Button Settings

The function of the power on/off button can be set to **Shutdown** or **Standby** in the Power Management Properties dialog box in the Windows Control Panel.

Power Saving Tips

To save power:

- Avoid operating the audio and video applications when using battery power. Operating video or audio equipment increases the thin computer's power requirements.
- Decreasing display brightness can also save power. Decrease brightness by pressing **Fn + ↓**. Increase it by pressing **Fn + ↑**.
- Remove external USB devices when not in use when the thin computer is turned off.

Heat Considerations

The thin computer's processor has been specially designed to consume little power, and generates very little heat. However, working in a hot environment, or working for long periods may raise the temperature. Your thin computer takes the following step to lower temperature:

- If the temperature continues to rise, processor activity will be reduced. You may notice a slight loss of performance when this happens.

Graphics System

Your thin computer has a high-performance graphics system, which can easily handle the demands of today's multimedia computing.

Screen Controls

Your screen can be adjusted for brightness and resolution.

Brightness

Function keys can increase or decrease the brightness of the display:

- **Fn + ↓** decreases the display brightness
- **Fn + ↑** increases the display brightness

Resolution

To adjust the resolution settings:

1. Click **Start | Settings | Control Panel**, and select the **Display icon**.
2. Click the **Settings** tab. The dialog box indicates the display resolution.
3. Use the slide bar to adjust the resolution. Normally, you should use 1280 x 800, the resolution that was designed for the display.

High Resolution with an external monitor

Higher resolution modes may be used, as long as the external monitor supports them.

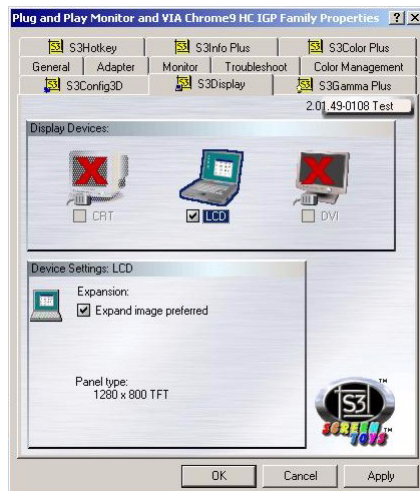
Connecting to an External Monitor

The thin computer has a VGA (analog) and DVI (digital) monitor port for connecting your thin computer to an external monitor. After the connection is made, the external monitor mirrors what is on your thin computer's monitor. To connect an external monitor to your thin computer:

1. Locate the VGA monitor port on the back side of your thin computer, or the DVI monitor on the left side of your thin computer.
2. Connect the video signal cable from the external monitor (or the VGA adapter) to the monitor port.
3. Connect the power cable from the external monitor to a power outlet and turn on the monitor.

4. On your thin computer, click **Start | Settings | Control Panel**, and select the **Display icon** to open the Display Properties window.
5. In the Display Properties window, click **Advanced** in the **Settings** tab.
6. Click the **S3Display** tab.

Figure 3-9 S3Display tab



7. Under Display Devices, choose CRT or DVI and click OK.
8. Click OK in the message box that says your settings will now be applied.
9. Click Yes in the message box that asks whether you want to keep the new settings.



4

Making Connections

This section provides information about the various ways your thin computer makes connections.

Your mobile thin computer makes connection through:

- Wired Net/LAN
- Built-in Wi-Fi (802.11b/g/n wireless LAN)
- Express card provided by data carriers
- Bluetooth*

*Bluetooth is a feature for X90Le.

Wired Net/LAN

To attach to a wired network, insert the network cable into the LAN RJ-45 network port at the back of the thin computer.

Wi-Fi

The thin computer uses Microsoft Wireless Zero Configuration. Follow the on screen instructions to connect to an existing wireless LAN.

Making a Connection

To make a connection to an existing wireless LAN:

1. Press **Fn + 2** to turn on wireless LAN in your thin computer. The indicator light for wireless activity lights up and remains active.
2. Hover over the wireless network icon in the taskbar to see if a wireless network connection is available, and then click the icon to open the Network Connections dialog box.
3. Click the **Wireless Network Connection** icon.
4. Click **Enabel This Network Device** under Network Tasks on the left side of the window.

Adding a Certificate

To add a certificate for certificate-based wireless networks:

1. Open **Internet Explorer | Tools | Internet Options**, and select the **Content** tab.

2. On the **Contents** tab, select **Certificates**.
3. Click on **Import** to open the Certificate Import Wizard window
4. Click **Next** and browse to the file where the certificate resides.
5. Follow the on screen instructions.

Express Card

The express card slot can be used as an interface between your thin computer and a variety of communications devices, such as network adapters, or can provide additional data storage capacity.

Installing a Card

To install a Card:

1. The top side of a express card is usually identified with a label. Insert the card into the slot with the label side up and the edge with pinhole contacts going in first.
2. Insert the card into the slot. You will feel some resistance as the card slides into the back of the slot.
3. Express cards require drivers, or a program that allows the operating system to use a specific device. Many drivers are included with Windows, but if not, you will be prompted to install the driver included with your card.
4. The thin computer will beep twice to indicate successful installation.

Figure 4-1 Installing an Express Card



**Note**

Please read the instructions included with individual express cards. Some cards may be inserted with power on, while others require that the thin computer be turned off.

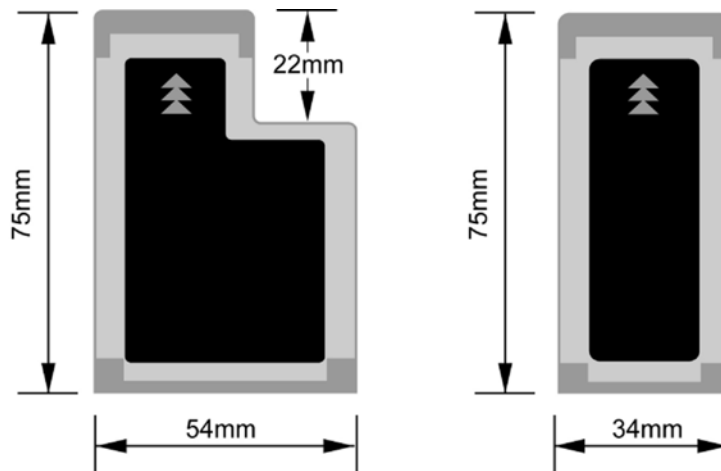
Removing a Card

Press the card again to release the card.

Express Card Size Restrictions

The card will not be able to eject if it is less the 75mm.

Figure 4-2 Express Card Size Restrictions



Bluetooth

Bluetooth is a feature for Wyse X90Le. The prerequisite for making this connection is a Bluetooth-enabled phone with Dial-Up Networking (DUN) capability and the Wyse X90Le thin computer.

**Note**

To establish a connection to a Bluetooth device, you must be logged in as an Administrator.

Creating a Partnership Between Phone and Thin Computer

To make a connection from your thin computer to the Internet through a Bluetooth device (your mobile phone), first establish the connection and then enable the use of the device.

**Note**

Before you start, make sure that your thin computer and phone are turned on and the batteries are fully charged.

Establishing the connection

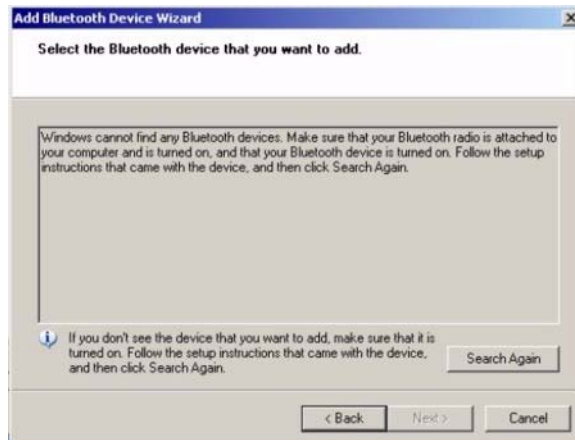
To make the connection between your thin computer and a Bluetooth device:

1. Turn on Bluetooth in your mobile phone as instructed by the mobile phone manual.
2. Press **Fn + 2** to turn on Bluetooth in your thin computer. The indicator light for wireless activity lights up and remains active.
3. Click on the **Bluetooth icon** in the taskbar to open the Bluetooth Devices window.
4. Click the **Add** button to open the Add Bluetooth Device Wizard.

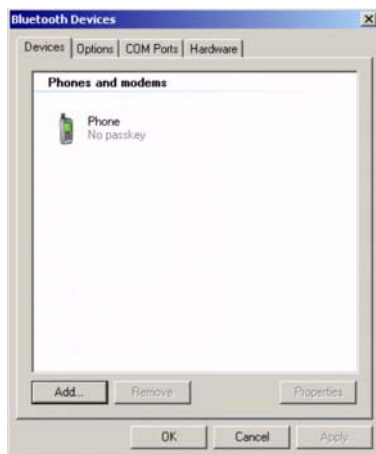
Figure 4-3 Welcome to the Add Bluetooth Device Wizard



5. Click the check box **My device is set up and ready to be found** and click **Next**.
6. If the following window appears, read and follow the directions, making sure your phone's Bluetooth is on and discoverable, and then press **Search Again**.

Figure 4-4 Add Bluetooth Device Wizard

7. If the mobile device is detected on your thin computer, select the device and click **Next**.
8. Select the option **Don't Use Passkey** and click **Next**.
9. The mobile device will be detected on the **Bluetooth Devices** window.

Figure 4-5 Bluetooth Devices Window

Enabling the Bluetooth device for connecting to the Internet:

To enable the Bluetooth device so it can connect to the Internet:

1. Select the device icon.
2. Click the Properties button
3. Select the Services tab. You see a list of services.
4. Click the Dial-up Networking (Dun) check box.

Connecting to a Network through a DUN-Capable Mobile Phone

To connect to a network through a DUN-capable mobile phone:

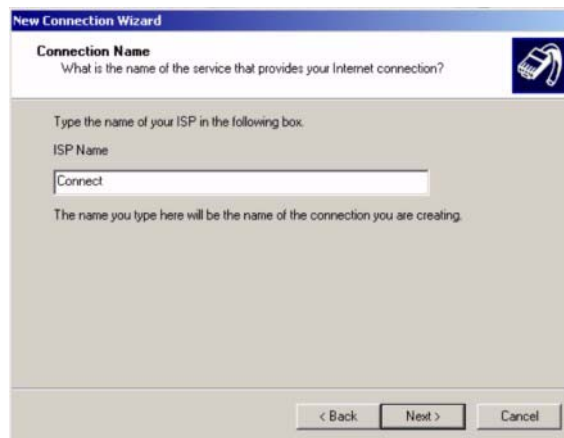
1. Click **Start | Settings | Control Panel | Network Connections** to open the Network Connections Window.
2. Click on **Create a new connection** to open the Network Connection Wizard and click **Next**.
3. Select the radio button **Connect to the Internet** and click **Next**.
4. Select the radio button **Setup my Connection manually** and click **Next**.

Figure 4-6 New Connection Wizard



5. Select the radio button **Connect using a dial-Up modem**, and click **Next** to open the New Connection Wizard.

Figure 4-7 Connection Name



6. Enter the ISP name and click **Next**. The ISP name is a user-friendly name (in this example, "Connect" was used).

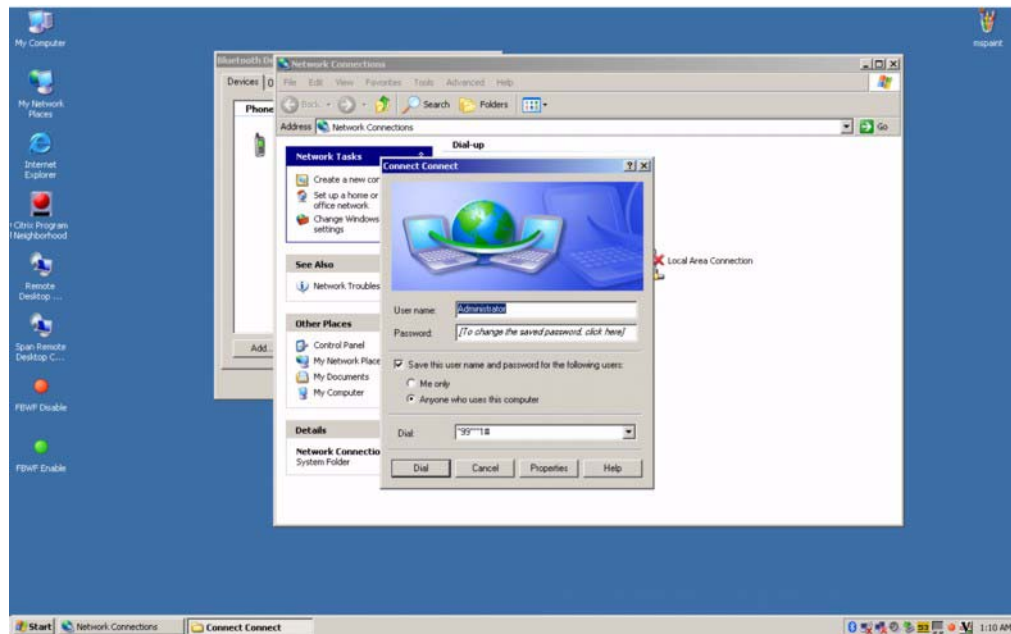
7. Enter the ISP's phone number.

**Note**

The ISP (Internet Service Provider) phone number is provided by your mobile phone provider and may require a special data plan.

8. Click **Finish** to finish the New Network Connection Wizard setup. A connection window opens.

Figure 4-8 Connection Window

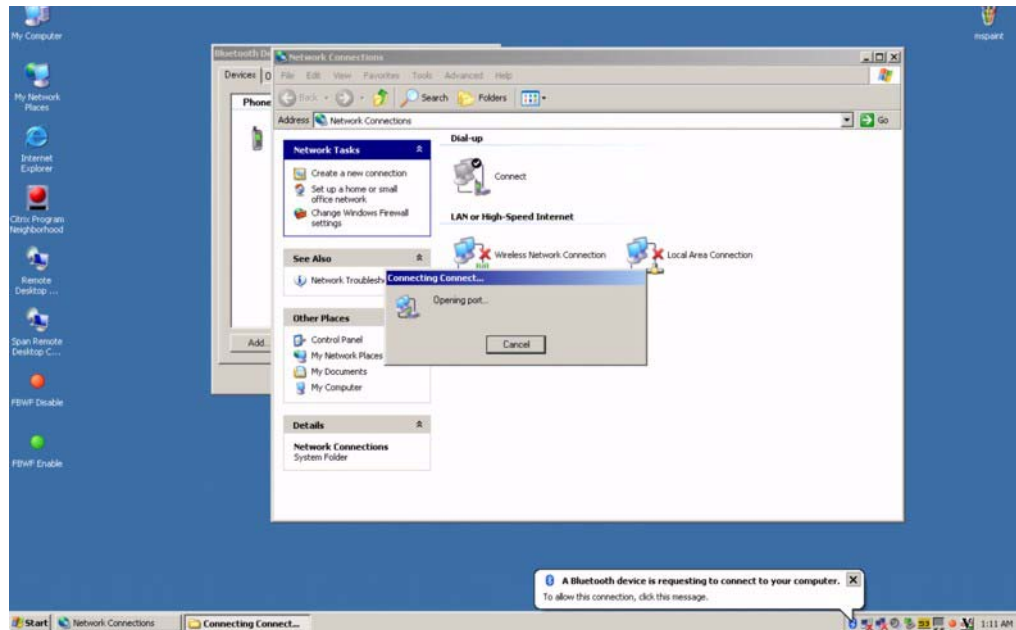


9. Enter Username and Password and click **Dial** to open the Opening Port window.

**Caution**

You can expect a delay for the Opening Port window to appear. Do not click on the **Cancel** button.

Figure 4-9 Opening Port



10. Click on the message pointing to the Bluetooth icon in the taskbar. The following window opens for entering a passcode.

Figure 4-10 Entering a Passcode, when Needed



11. Enter the **Passkey** number and click **Next**. Within a few moments the mobile phone also asks for the Passkey. Enter the same key.

12. In the taskbar the *Connect is now connected* message appears.

Disconnecting Windows Bluetooth DUN

To disconnect a Bluetooth device:

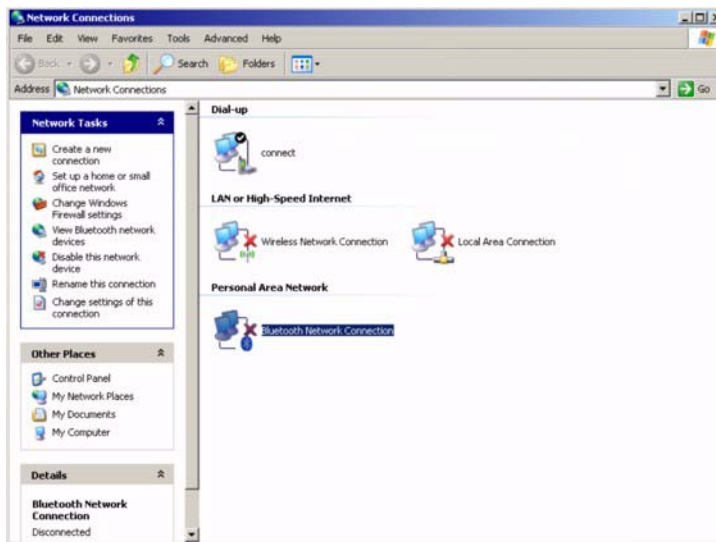
1. In the Network Connections window under **Dial-up**, find the connection you previously created for your Bluetooth DUN connection.



Note

“Connect” is the name given as the ISP Name (as shown in Figure 4-7).

Figure 4-11 Network Connection



2. Right-click on the **Connect Icon** and then click on **Disconnect**.

This page intentionally blank.

5

Establishing a Server Environment

This section contains information on the network architecture and enterprise server environment needed to provide network and session services enabling Wyse X class thin computers network connection. It also includes information to help you to address important considerations when configuring access to the server environment and when configuring the services to be provided by the server environment.

Setting Up Access to the Enterprise Servers

There are five basic methods of access to the enterprise server environment available to the thin computer. Except for Ethernet Direct, all of the access methods require that some local settings be made on the thin computer. These local settings are retained and are available for the next thin computer system start. Activating these local settings and the defined connections can also be automated at thin computer system start.

Methods of access include:

- **Ethernet Direct** - This is a connection from the thin computer Ethernet port directly to the enterprise intranet. No additional hardware is required. In this configuration all network services may be used, including the enterprise DHCP server. A DHCP server on the network can provide not only the thin computer IP address, but also the location of the file server containing the software updates.
- **Wireless Direct** - A supported wireless adapter (or the optional internal wireless feature) can be used to access the enterprise intranet. A wireless adapter uses short-range wide-band radio to communicate with a wireless access point. Typically, wireless access points are located at several locations in the enterprise within range of the wireless adapters and directly connected to the enterprise intranet.
- **PPPoE** - Thin computer support for Point-to-Point Protocol over Ethernet (PPPoE) is intended for devices which connect to the Internet directly from remote locations. The New Connection Wizard can be used (available from Network Connections in the Control Panel) to configure and invoke a PPPoE connection. Once connected, all packets are through a PPP connection over Ethernet to the DSL modem. For more information on the New Connection Wizard, refer to documentation on the Microsoft Web site at: <http://www.microsoft.com>.
- **Dial-up Modem** - A dial-up modem can be used with the thin computer to access a dial-up server. The dial-up server must be a Microsoft Remote Access Server or another server that supports industry-standard protocols. The dial-up server can provide either of the following methods of access to the enterprise intranet:
 - Direct access - An enterprise dial-up server directly connects to the enterprise intranet.
 - Indirect access - An Internet Service Provider (ISP) dial-up server simply provides access to the Internet, from which the thin computer accesses an enterprise PPTP VPN server that connects to the enterprise intranet.

- **VPN (PPTP)** - PPTP (Point-to-Point Tunneling Protocol) is a network protocol that enables the secure transfer of data between a remote computer (in this case the thin computer) and an enterprise server environment by creating a virtual private network (VPN) across TCP/IP-based data networks such as the Internet. It provides a password-protected path through the enterprise firewall to the enterprise server environment in which the network and session services required thin computers reside. The New Connection Wizard can be used (available from Network Connections in the Control Panel) to configure and invoke a VPN connection.

An Internet Service Provider (ISP) must be available to provide access to the Internet. Any of the standard means of connecting to the ISP may be used, such as a dial-up modem, cable modem, and DSL modem. The connection to the ISP must be established first, before contacting the enterprise PPTP VPN server. This includes dial-up access as well as direct access through the cable modem and DSL modem paths. For more information on the New Connection Wizard, refer to documentation on the Microsoft Web site at:
<http://www.microsoft.com>.

**Note**

More information about setting up access to the enterprise servers is available in the thin computers' operating system documentation, *Administrators Guide: Wyse® 9 Series, Based on Microsoft® Windows® XP Embedded*.

6

Frequently Asked Questions

This section contains information and help on installation, setup, conflicts, and general troubleshooting.

Table 6-1 Frequently asked questions about the Wyse X90L and Wyse X90Le

Question	Answer
My screen seems to time out too quickly. I have to constantly hit a key or move the mouse in order to bring it back. How can I adjust the screen time-out?	This is part of Windows Power Management. Access Power Management by logging in as an Administrator and clicking on Start Settings Control Panel Power Options . Adjust the display time-out by selecting a time next to the Turn off monitor option . You may also select different time-out values for adapter and battery power states.
What kind of external microphone can I use with my thin computer?	You need to use a self-amplifying microphone.
Because of a software problem, I was unable to shut down power normally. I pressed the power button to force a power off, but it didn't work. How can I force a power off?	Make sure you press the power button for at least four (4) seconds. Normally, this will force a power off. If this does not work, you can shut down the thin computer by inserting a needle into the reset button pinhole. (The reset button locates on the thin computer bottom side.)
Why can't I charge the battery of my thin computer after it was out of use for some time?	After mobile thin computers have not been used for a long time (more than one month), the batteries will go into the low voltage protection mode due to data back-ups and natural electrical discharge. At that point, restoring normal voltage will require slow charging over a period of several hours. Calibration can be performed after the battery has returned to a normal condition.

This page intentionally blank.

Figures

3-1	Battery Latches	9
3-2	Connecting the Power Cable	10
3-3	Numeric Keypad	13
3-4	Touch Pad	13
3-5	Power Option Properties - Power Meter	15
3-6	Power Option Properties - Alarms	16
3-7	Battery Latches	17
3-8	Power Option Properties - Advanced	18
3-9	S3Display tab	20
4-1	Installing an Express Card	22
4-2	Express Card Size Restrictions	23
4-3	Welcome to the Add Bluetooth Device Wizard	24
4-4	Add Bluetooth Device Wizard	25
4-5	Bluetooth Devices Window	25
4-6	New Connection Wizard	26
4-7	Connection Name	26
4-8	Connection Window	27
4-9	Opening Port	28
4-10	Entering a Passcode, when Needed	28
4-11	Network Connection	29

Tables

3-1	System Indicator Lights for Status and Power	11
3-2	Keyboard Function Keys for System Control	12
6-1	Frequently asked questions about the Wyse X90L and Wyse X90Le	33

Users Guide

Wyse[®] Mobile Thin Computer X90L/X90Le
Issue: 030708

Written and published by:
Wyse Technology Inc., March 2008

Created using FrameMaker[®] and Acrobat[®]